

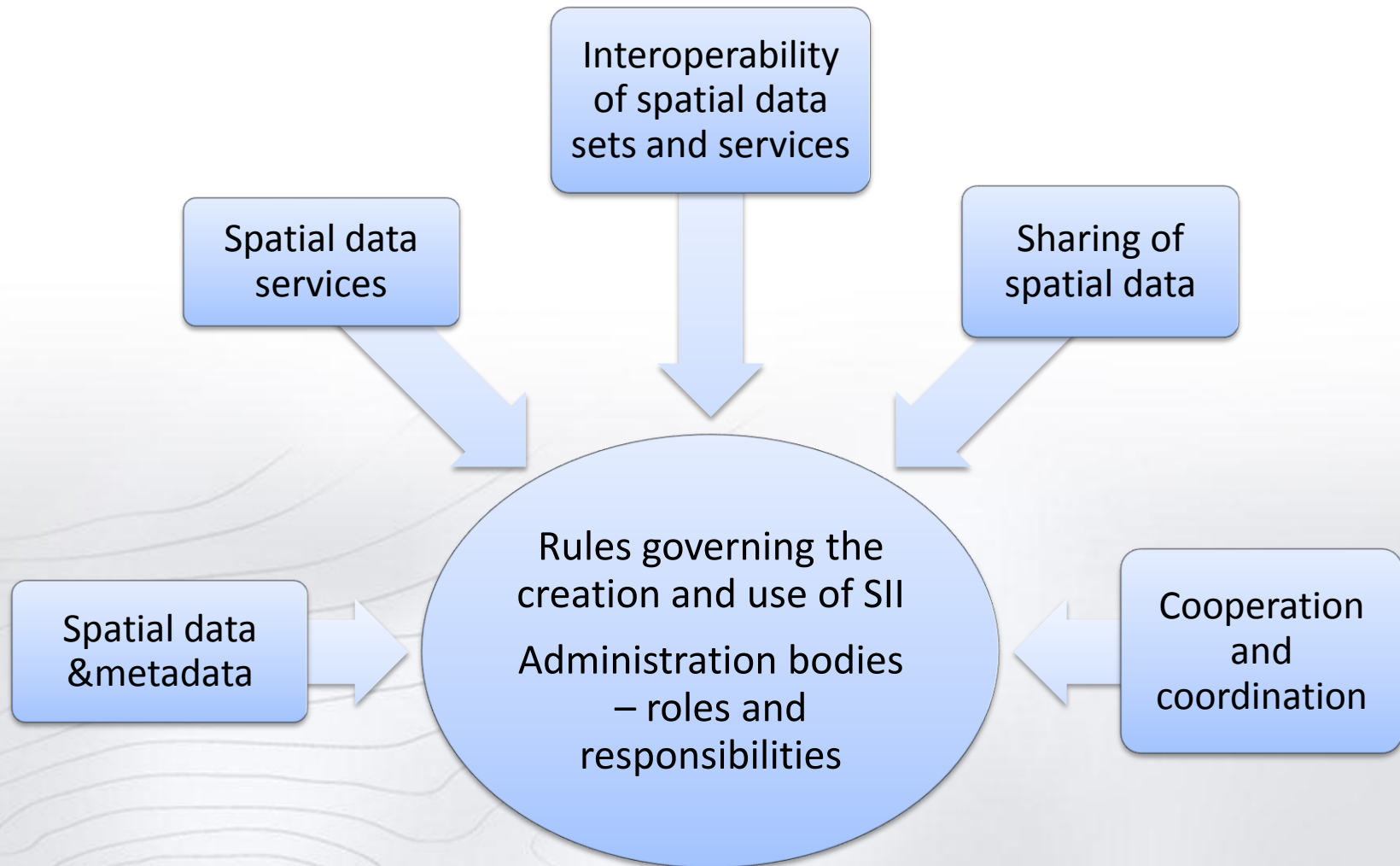


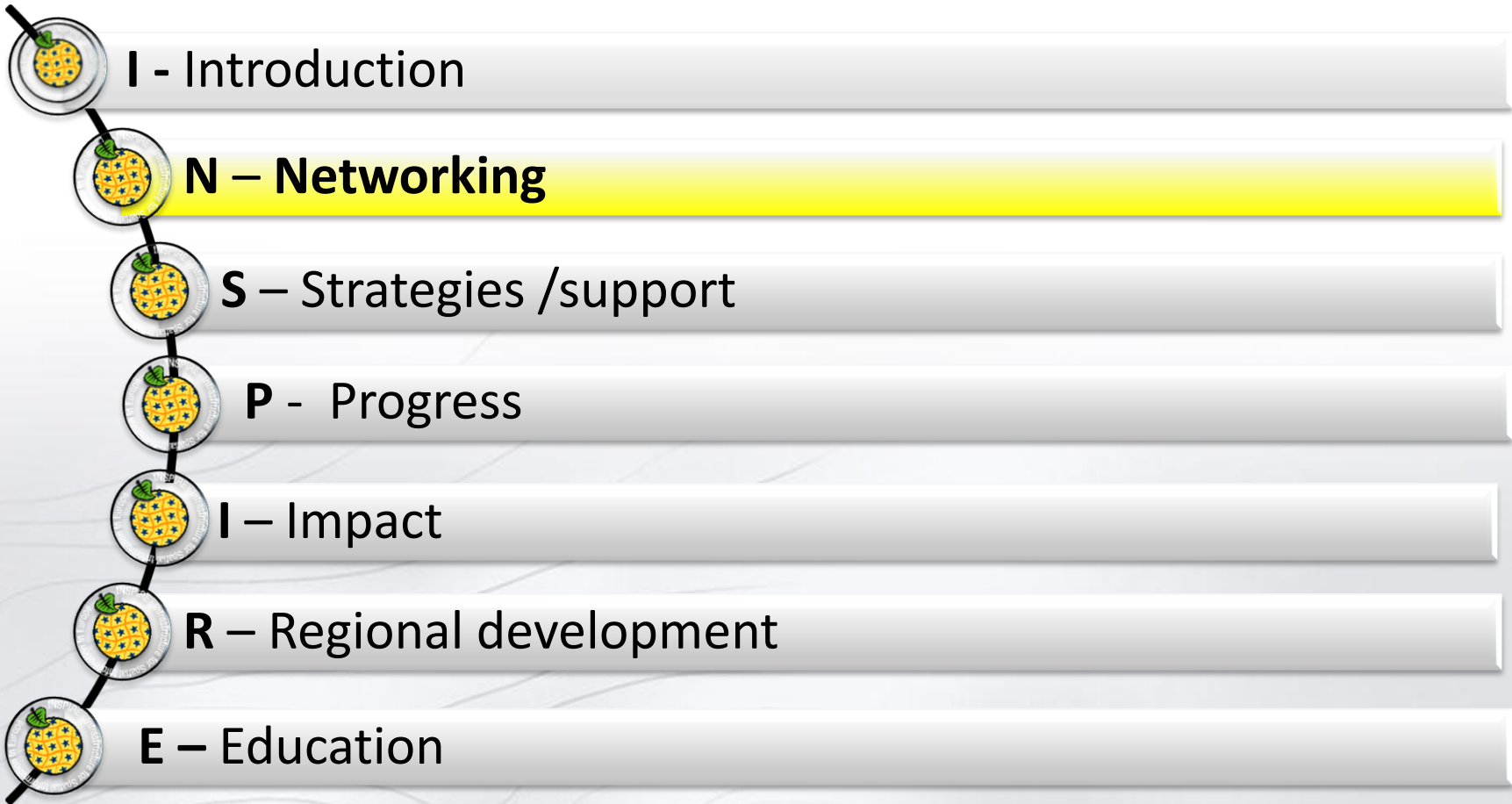
Polish INSPIRE coordination and regional achievements on SII

Ewa Surma

Lisbon, 28.05.2015









Three-level of coordination

Level one

the coordinator for entire infrastructure - the minister responsible
for public administration

Assistance: of the Surveyor General of Poland, Council for Spatial Information
Infrastructure

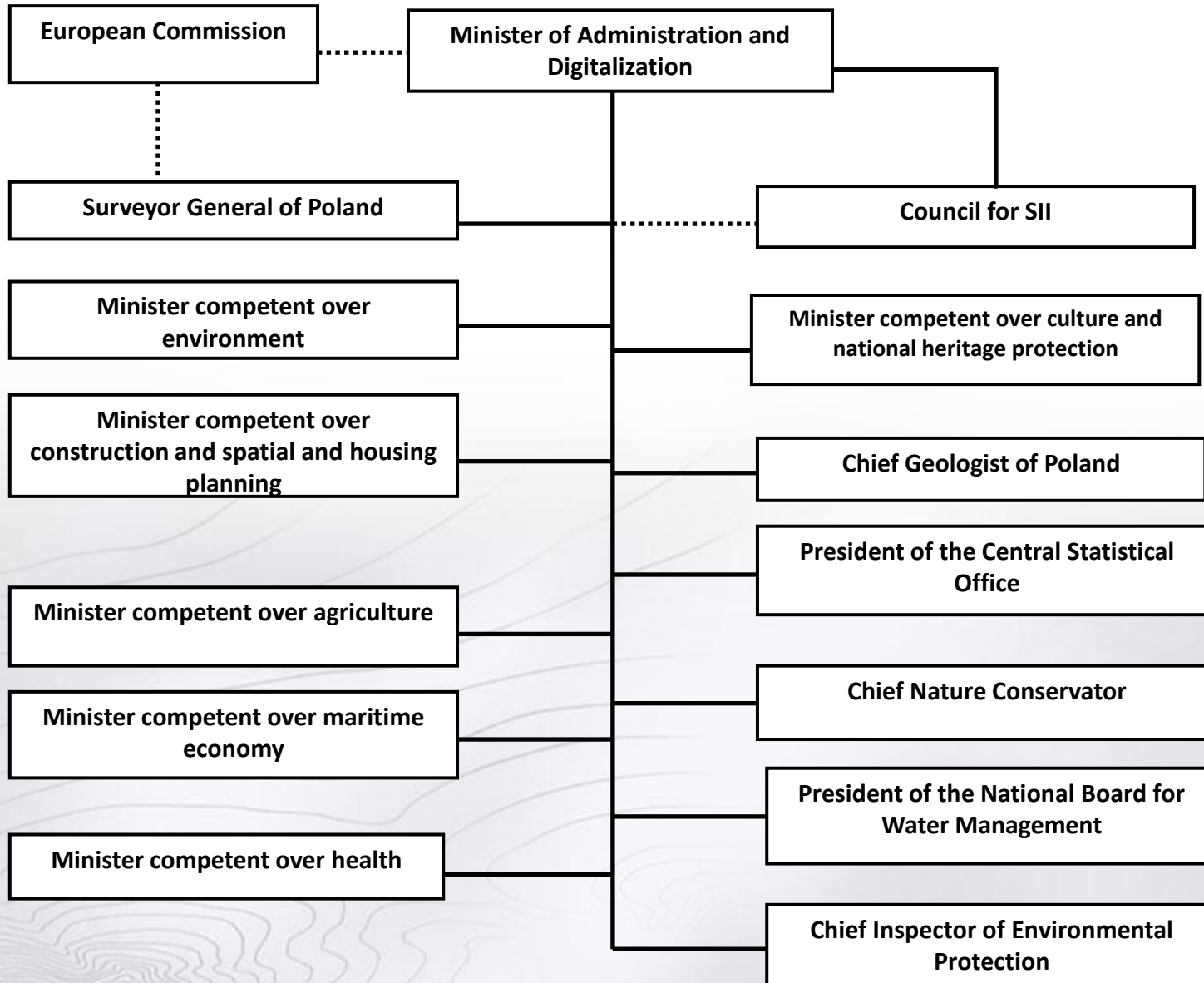
Level two

leading public bodies in the 12 thematically defined parts of
infrastructure

Level three

other bodies that keep public registers, which
contain spatial data included in the infrastructure.

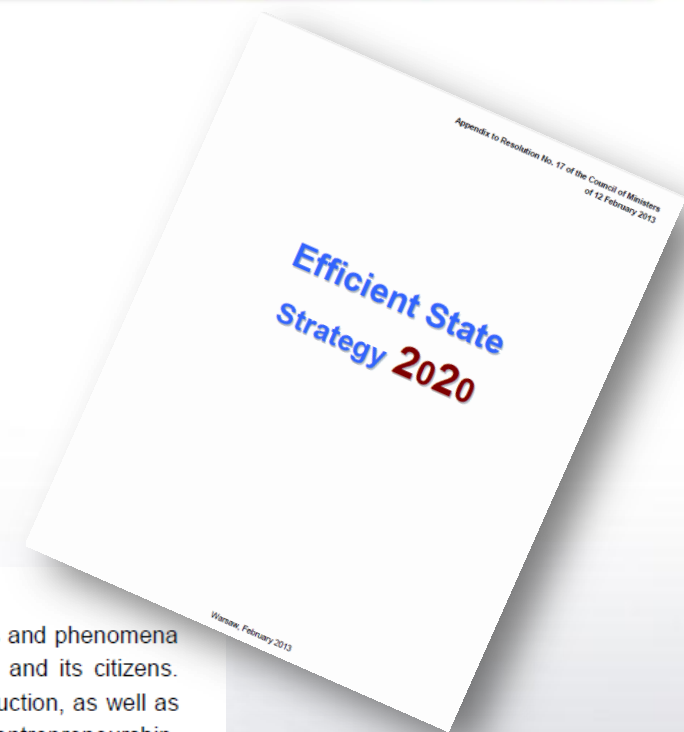
Networking







- Proper rank to spatial information
- Spatial information is „located” in different governmental strategies:
 - Efficient State
 - Integrated Computerisation of the State
 - Operational Programme - Digital Poland



3.2.3. Supporting the development of the use of spatial information using digital technology.

Access to current and accurate spatial information includes data on the geographical environment, objects and phenomena throughout space surrounding the man is essential to the proper functioning of the state, its economy and its citizens. Spatial information is used in almost all sectors of the economy – including in agriculture, forestry, construction, as well as public administration and private business activity. In order to build an information society, develop entrepreneurship, develop innovation and improve the competitiveness of businesses the market, and to ensure economic development of the state, widespread and easy access to spatial information in electronic form is essential. Harmonised data and services, under standardised rules, are provided by the government's geoportal.

The service Geoportal.gov.pl¹⁰⁵, indicated in the report of the European Commission on e-government across the European Union as an example of best practice in access to public services via the Internet, provides affordable, high quality and interoperable services that contribute both to an increase in the need for using Internet by citizens, businesses, emergency services, groups of social exclusion and public administration, as well as to the development of digital literacy and an increase in effectiveness of actions (saved time of settling official matters, fewer paper documents, shorter service time in offices, lower costs of functioning of the state and local government) in those areas of life where direct relationship “the state-citizen” is necessary. Interoperable services are available in a range of spatial data in the state and in the spatial data INSPIRE.

Interoperability of systems created by public administration bodies, including the provision of services, is crucial in the construction of e-government. The integration of systems and the use of services offered by the government's geoportal

Support for SII



Council for Spatial Information Infrastructure

Leading bodies, representatives of other government administration bodies, self-government units, academic institutions





www.radaaip.gov.pl

- collegiate body dealing with SII on the interministerial and interenvironmental level bridging most interested in spatial information
- operates on the basis of law on SII
- aims for coordination on building SII through development of effective cooperation between leading bodies
- leads initiatives on rationalization of SII





Programme of creation of Spatial Information Infrastructure - common initiative of 12 leading bodies

Coordination structure

Complementary measures
Coordination and **cooperation**

Legal basis

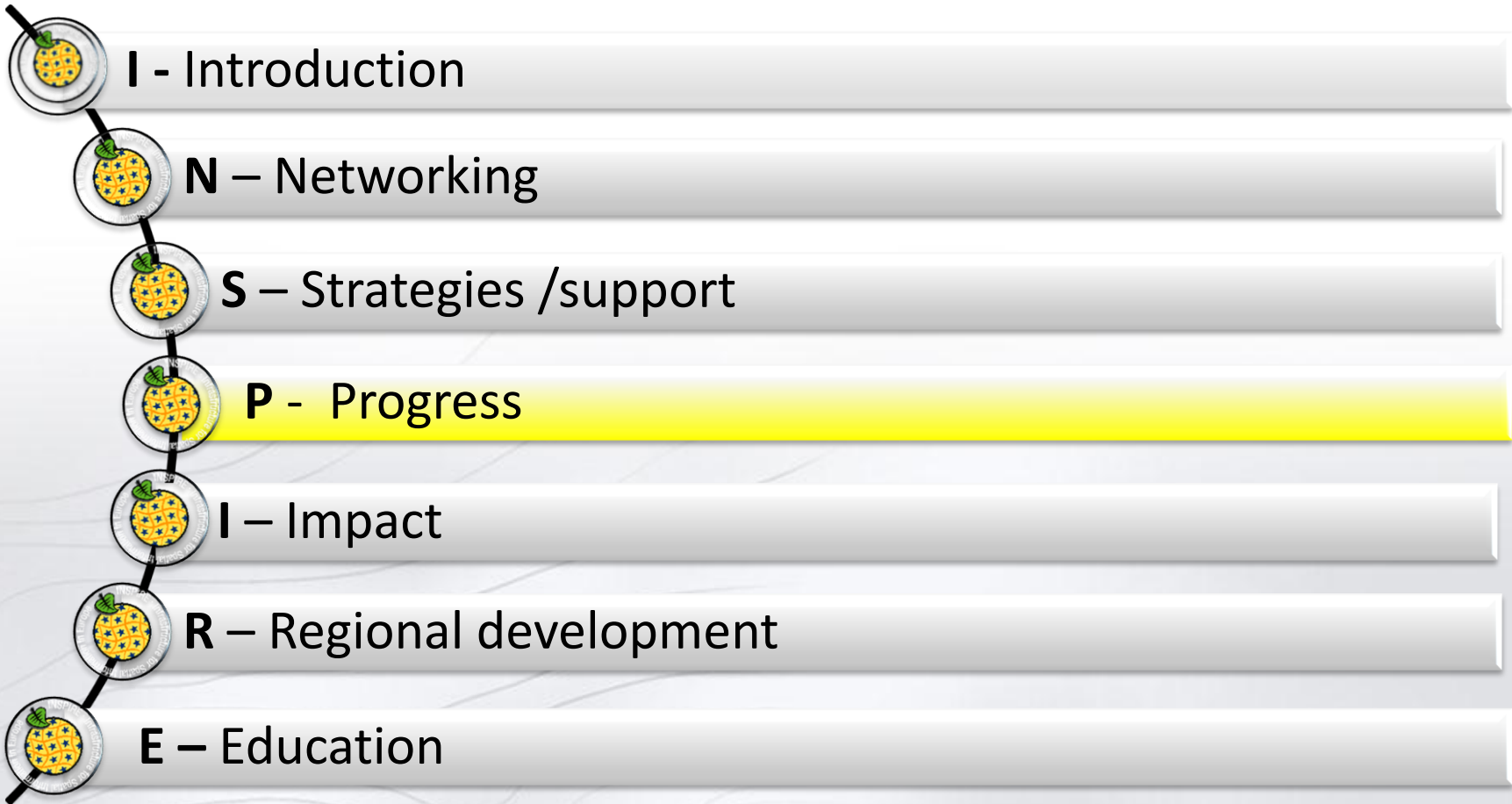
Research and development

Thematic scope

**Maintenence and use of
spatial data sets & services**

Knowledge dissemination and
education of specialists

INSPIRE cooperation








REMOVING
BARRIERS

Open Data

no barriers with the access and use of the data

Registers free of charge:

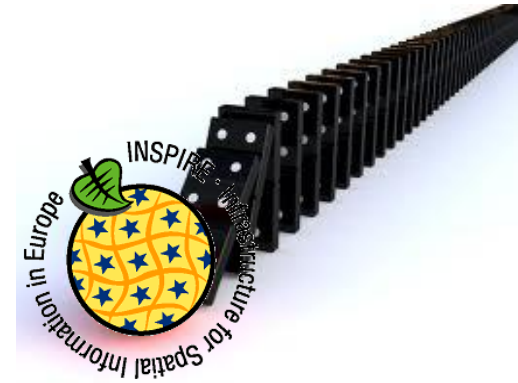
-  PRG – National Register of Boundaries and Areas of territorial division units of the country;
-  PRNG – National Register of Geographic Names,
 - NMT – Digital Terrain Model (100m),
-  BDO250 - Database of general geographic objects

For educational and research purposes all data from geodetic and cartographic resource available for free





Implementing rules to the geodetic and cartographic law - 14 enactments concerning the state geodetic and cartographic resources



Implementing rules assume:

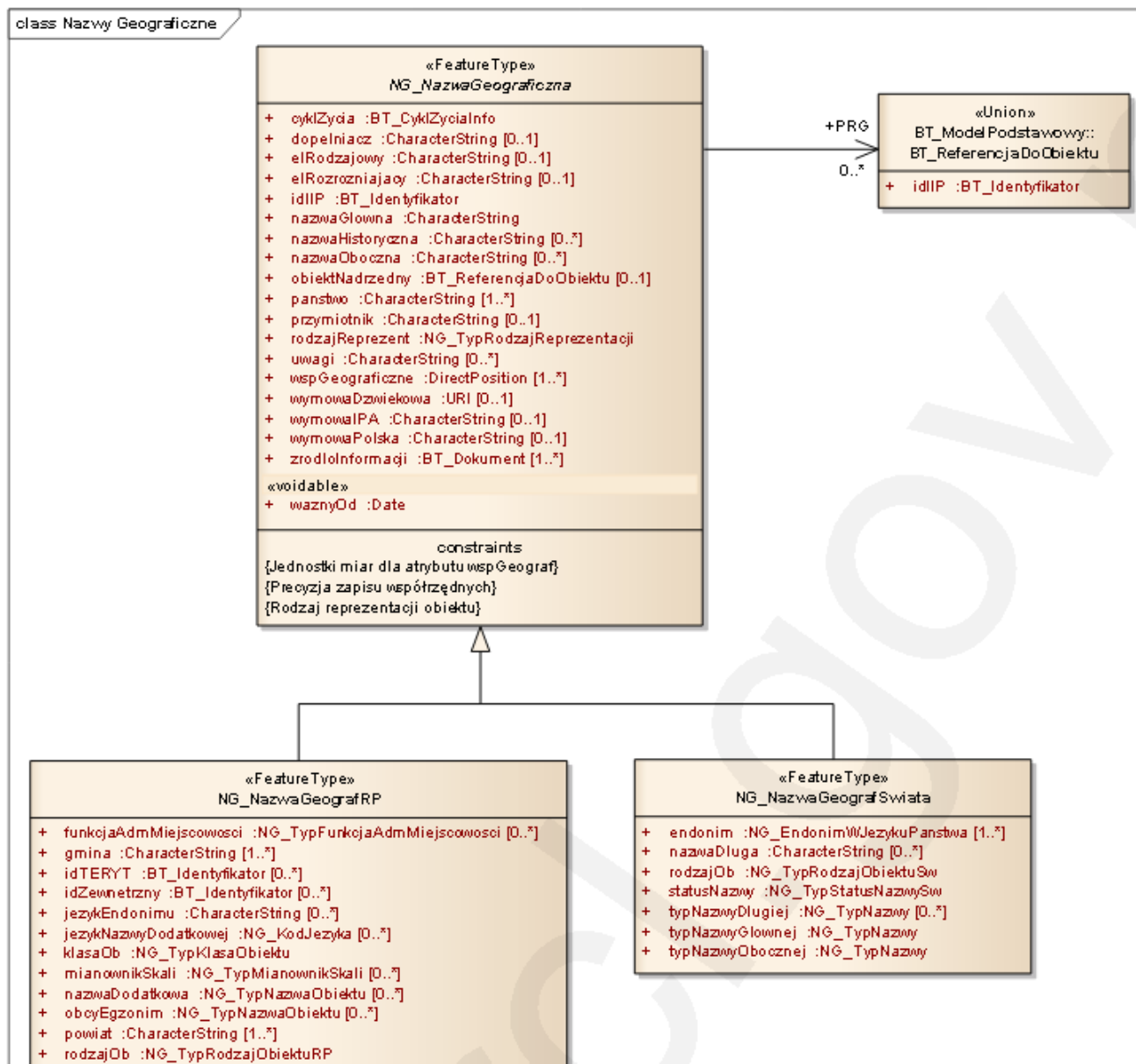
- **official reference character of geodetic and cartographic registers**
- **harmonization of the collections of state resource**
- **integration**
- **interoperability**
- **GML standards for exchanging data**





- BUILDINGS,
CONSTRUCTIONS
- ROADS NETWORK
- WATER NETWORK
- LAND COVER
- LAND USE
- PROTECTED AREA
- UTILITIE NETWORK
- ADMINISTRATIVE
BORDERS

Application schema in UML



GML – format for data exchange



EGiB

```

<complexType name="BDZ_JezdniaType">
  <complexContent>
    <extension base="bdz:BDZ_ObjektBDOT500Type">
      <sequence>
        <element name="materialN" type="bdz:BDZ_RodzNawType"/>
        <element name="rodzajKomun" type="bdz:BDZ_RodzKomunType"/>
        <element name="poziom" type="bdz:BDZ_PoziomType"/>
        <element name="nazwa" type="bdz:BDZ_NazwaType"/>
      </sequence>
    </extension>
  </complexContent>
</complexType>

```

BDOT500

```

<complexType name="BDZ_Kraweznik" type="bdz:BDZ_KraweznikType"
  substitutionGroup="bdz:BDZ_ObjektBDOT500">
  <complexContent>
    <extension base="bdz:BDZ_ObjektBDOT500Type">
      <sequence>
        <element name="nazwa" type="bdz:BDZ_NazwaType"/>
      </sequence>
    </extension>
  </complexContent>
</complexType>

```

GESUT

```

type="ges:GES_KorytarzPrzesylowyPropertyType">
  <annotation base="gml:AnnotationPropertyType" appinfo="{}"/>
</complexType>

```

BDOT10K

```

<complexType name="BDZ_JezdniaType">
  <complexContent>
    <extension base="bdz:BDZ_ObjektBDOT10KType">
      <sequence>
        <element name="materialN" type="bdz:BDZ_RodzNawType"/>
        <element name="rodzajKomun" type="bdz:BDZ_RodzKomunType"/>
        <element name="poziom" type="bdz:BDZ_PoziomType"/>
        <element name="nazwa" type="bdz:BDZ_NazwaType"/>
      </sequence>
    </extension>
  </complexContent>
</complexType>

```

GML format for exchanging data
***.gml**

```

<attributeGroup ref="gml:AssociationAttributeGroup"/>
<attributeGroup ref="gml:OwnershipAttributeGroup"/>
</complexType>

```

```

<element name="nazwa" type="gml:StringPropertyType"/>
</element>
<extension base="gml:GeometricPrimitivePropertyType"
  ref="gco:nilReason"/>
</extension>
<simpleContent type="gml:StringPropertyType"
  base="gml:StringPropertyType"
  substitutionGroup="gml:GeometricPrimitivePropertyType"
  use="replace"/>
</simpleContent>
</complexType>
</element>
<element name="geometria" type="gml:GeometricPrimitivePropertyType"/>
</element>
<!-- Roles -->

```


Regional Development



Regional development – different needs and targets



- Team on RSII
- Regional Infrastructure for Spatial Information – infrastructure of spatial data specific for the particular region in terms of thematic and territorial scope (together with SII data)
- RSII enriches the SII resource and is the contribution of local government to our SII
- Proper development requires interoperability

Regional SII



miip.geomalopolska.pl/imap/?startwg=wgCustomHtmlNews&gui=new&gmap=gp40&bbox=337429.99199898395,66920.12403691473,845431.008001016,359549.8759630853&SRS=2180&active_lyr=id:id=geopard.Prod_reg.mapId:msf

Aplikacje Sugerowane witryny 24893 - Identify an ... Working with Spatia... int Kolorowa satelka z ... Spatial Reference Li... Kody EPSG układów... line topology table ... network diagram gi... www.geom.uni.wroc... YouTube Oglądaj mecz! Snajper Allegro, eBa...

MIIP Produkty regionalne i tradycyjne

Legenda

Zawartość mapy Serwisy Legenda

- Produkty regionalne
 - Chronione Oznaczenia Geograficzne
 - Chronione Nazwa Pochodzenia
- Produkty tradycyjne
 - gotowe dania i potrawy
 - inne produkty
 - miody
 - napoje
 - oleje i tłuszcze
 - produkty mięsne
 - produkty mleczne
 - produkty rybactwa
 - warzywa i owoce
 - wyroby piekarnicze i cukiernicze

Granice

Szukaj na mapie (w BDOT)

Szukaj

Panel informacyjny

Uaktualnione dane

19 maja 2015 r.

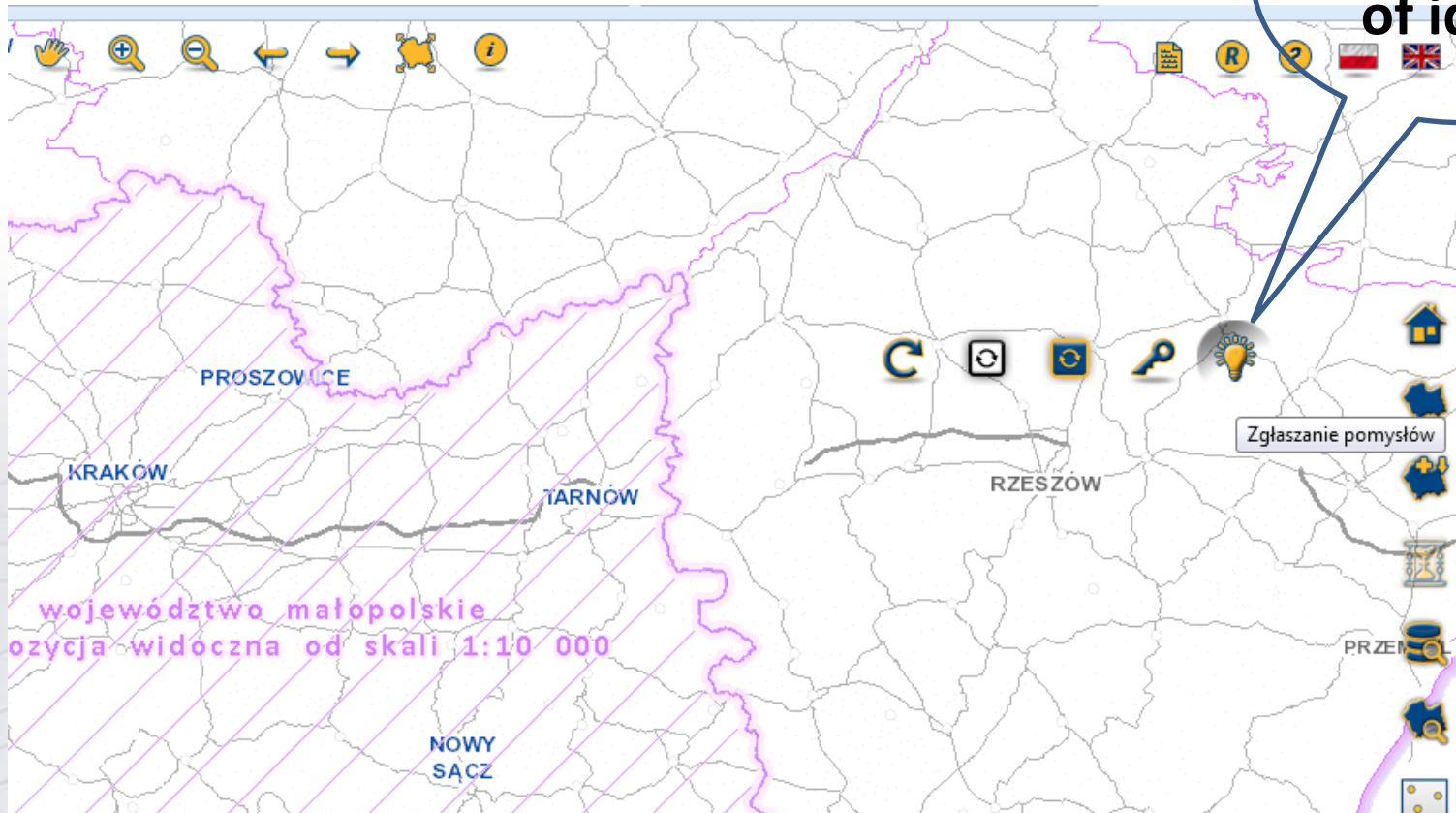
- Aglomeracje wodne
- Hydrogeoróżnorodność Województwa Małopolskiego
- Źródła promieniowania elektromagnetycznego

W ostatnim czasie uaktualnione zostały granice Aglomeracji wodnych, obszary górnicze (kompozycja Hydrogeoróżnorodności) (Mięso i przetwory Mięso i przetwory Mięso i przetwory)

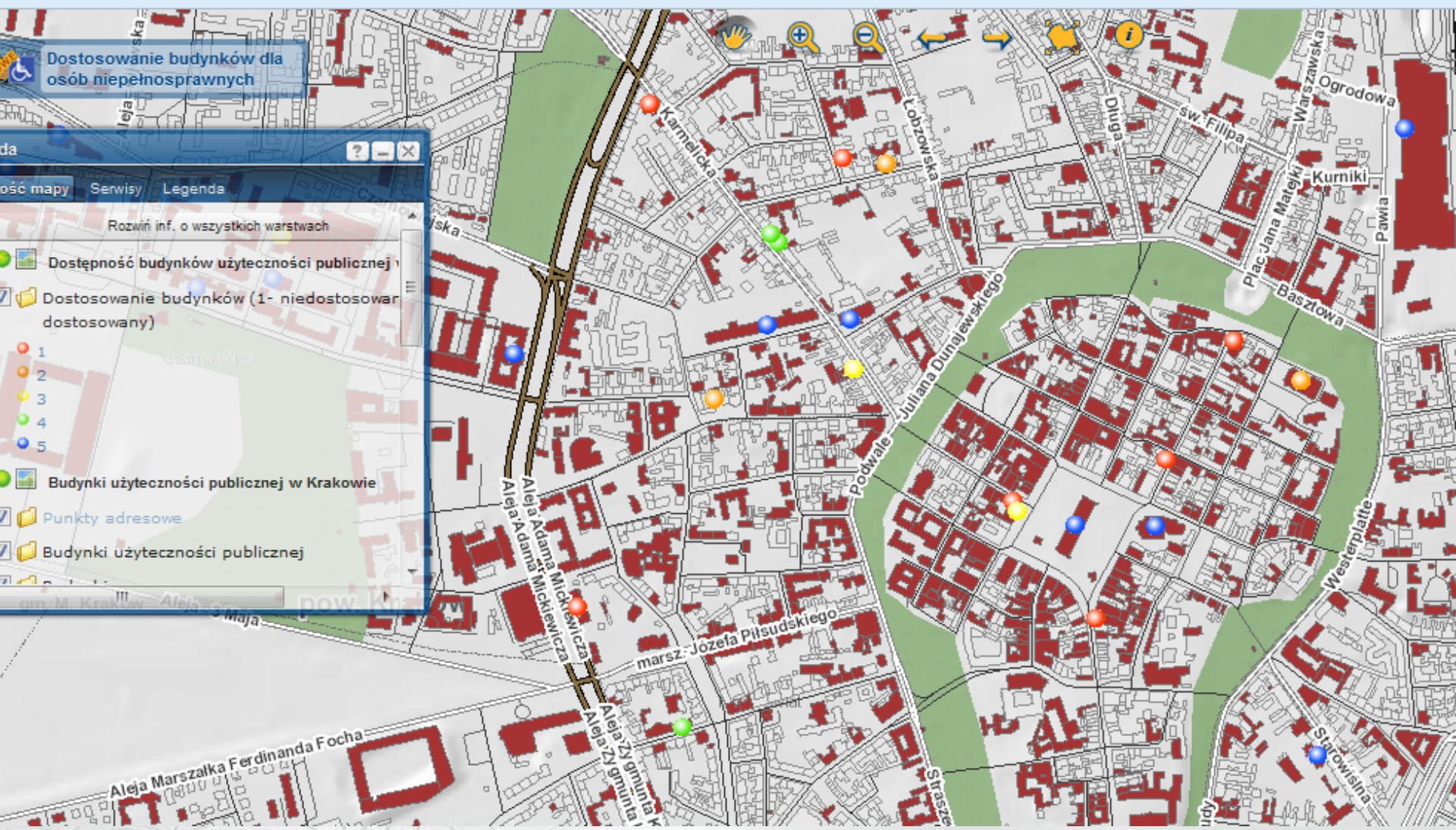
Regional SII



Collecting
of ideas



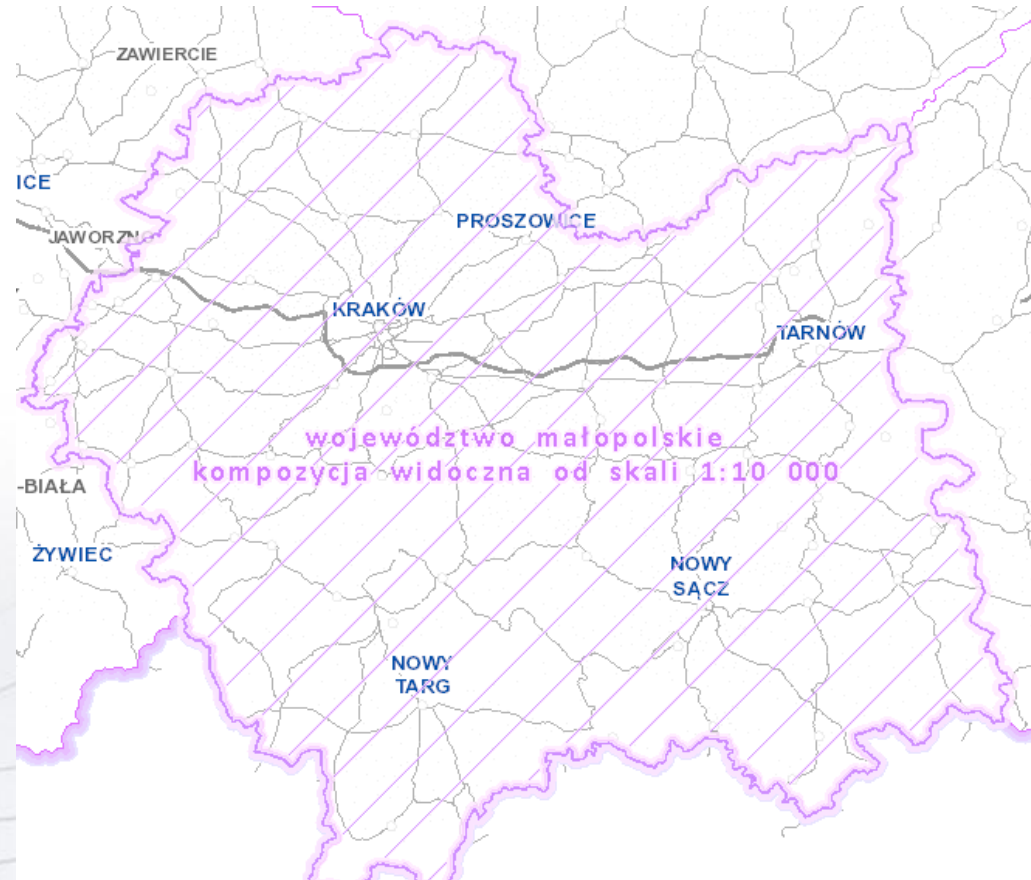
Regional SII – user needs



Regional SII – key aspects



- Develops dynamically
- Meets user and region requirements
- Uses INSPIRE solutions
- Builds awareness of the benefits of spatial data
- Gives the possibility to users in its improvement







Education



„At the national level, there is a need to increase communication, **education** and **training** measures necessary to implement INSPIRE [...]. *Mid term evaluation report on INSPIRE implementation, 2014*

„Leading bodies within their jurisdiction [...] are obliged to create and implement training [...]” Polish Act on SII

Education and trainings for public administration
to support INSPIRE implementation and NSDI development 2009-2012

For more information on past and present and future activities regarding training and education for INSPIRE capacity building see the poster



Summary



- **Coordination and cooperation is the crucial aspect of proper INSPIRE implementation**
- **The INSPIRE Directive has already influenced different domains in terms of legal, technical and organizational measures**
- **Regional SII has to meet user requirements and also needs of the region's population**
- **Constant education and trainings are the key factors to take full advantage of the spatial information**



Thank you for your attention

ewa.surma@gugik.gov.pl

pol-inspire@gugik.gov.pl